

HA-T M A
C NO.: EM1002
F

O

P

HA-Tag Mouse Monoclonal antibody

S

Mouse

A

W B IP IF

S

N/A

R

W B :1/5000
:1/200
:1/1000

NOTE: O

I

Synthetic Peptide

S

N/A

S

PBS with 0.02% sodium azide and 50% glycerol pH 7.4.
Store at -20 °C. Avoid repeated freeze-thaw cycles.

I

IgG1

C

Monoclonal

C

1 mg/ml

O

N/A

G ID H

N/A

H S -P N .

N/A

C

N/A

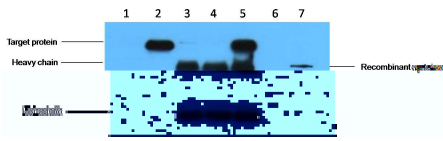
A N

N/A

B

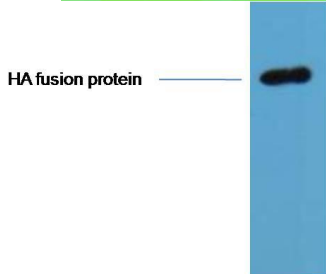
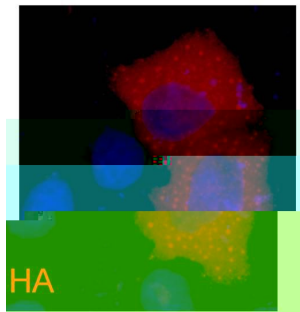
Human influenza hemagglutinin (HA) is a surface glycoprotein required for the infectivity of the human virus. The HA tag is derived from the HA-molecule corresponding to

protein.HA tag antibody is a highly sensitive and affinity monoclonal antibody applicable to HA-tagged fusion protein detection.



IP antibody use 5ug HA Mouse IgG1 per ml LysateWB:5000
 untransfected 293 cell lysate 2 transfected 293 cell lysate with HA-tag
 fusion protein 3 IP(untransfcted 293+anti-HA mAb+Protein G agarose) 4
 IP (transfected 293+ normal Mouse IgG+Protein G agarose) 5 IP
 (transfected 293+anti-HA mAb+ Protein G agarose) 6 IP (transfected
 293+Protein G) 7 Recombinant protein (E.coli)

IF analysis of 293 cells transfected with a HA-tag protein using ELKbio anti-HATag Mouse mAb at a:2000 dilution (blue DAPI red anti-HA)



0.5ug HA fusion protein+ Primary antibody dilution at:10000.