



ELK Biotechnology

C III M A
C NO.: EM1123
F .
O

P Collagen III Mouse Monoclonal antibody

S Mouse

A B IHC

S H R M

R B :1/1000

I :1/200-500
NOTE: O

I Synthetic Peptide

S Human

S PBS with 0.02% sodium azide and 50% glycerol pH 7.4.
Store at -20 C. Avoid repeated freeze-thaw cycles.

I IgG1

C Monoclonal

C 1 mg/ml

O 138 D

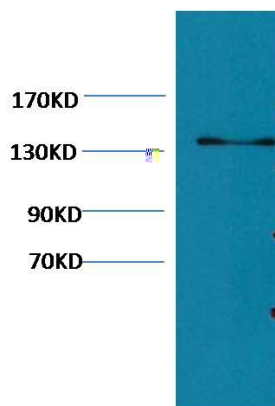
G ID H 1281

H S -P N . P02461

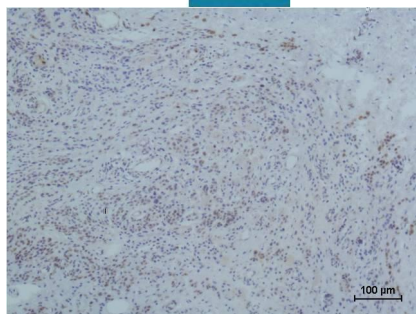
C Secretedextracellular spaceextracellular matrix

A N CO3A1 antibody Collagen alpha(III) chain antibody Collagen III alpha chain precursor antibody Collagen type III alpha antibody

B Collagen alpha-1(III) chain is a fibrillar collagen that is found in extensible connective tissues such as skin lung and the vascular system frequently in association with type I collagen.



Western blot analysis of Hela with EM1123 diluted at:1000.



Immunohistochemical analysis of paraffin-embedded human Skin Tissue using Collagen III EM1123 Mouse mAb diluted at:500.